



User's manual VM341/VM341-2

Safe & Sound® Full Color Video Monitor



Congratulations

on purchasing your new VTech product. Before using this product, please read **important safety instructions**.

For support, shopping, and everything new at VTech, visit our website at www.vtechphones.com.

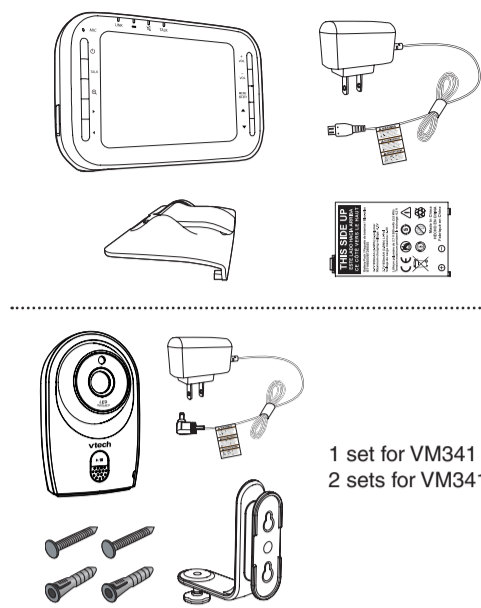
Register online to get an additional 3-month warranty!

Visit www.vtechphones.com.

Registration
Register your product online for enhanced warranty support.

Product news
Learn about the latest VTech products.

What's in the box



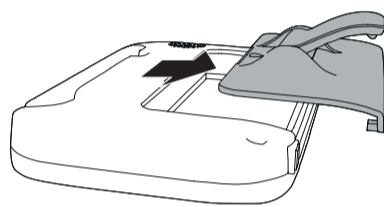
1 set for VM341
2 sets for VM341-2

Install the battery

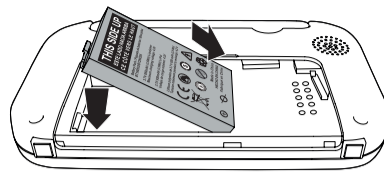
You can power up the parent unit by connecting it to AC power or to the rechargeable battery provided. Even if the parent unit is connected to AC power, we recommend you also install the battery. This guarantees continual operation in case of a power outage.

Install the battery as shown below.

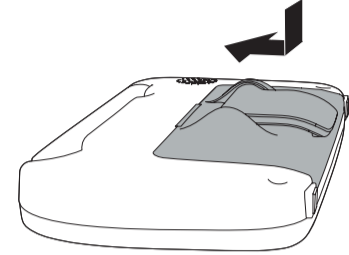
- Press down on the large tab of the battery compartment cover and pull it out.



- With the label **THIS SIDE UP** facing up, insert the small tabs of the battery into the slots inside the battery compartment. Make sure the metallic contact is correctly oriented as shown below. Push the battery into the battery compartment until it clicks securely into place.



- Align the battery compartment cover flat against the battery compartment, then slide it towards the center of the parent unit until it clicks into place.



Replace the battery

To replace the battery, press down on the large tab of the battery compartment cover and pull it out, then follow the steps above to install the battery.

NOTES

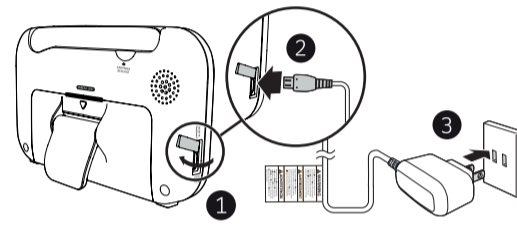
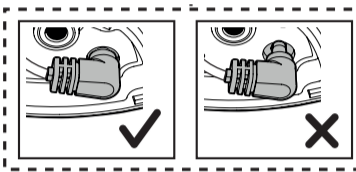
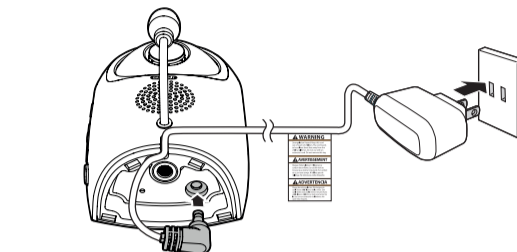
- The operating time for using the rechargeable battery is short. If you want to monitor your baby for a long time, we recommend you connect the parent unit to AC power.
- If the parent unit will not be used for a long time, disconnect and remove the battery to prevent possible leakage.

Connect and charge the battery

NOTES

- Use only the battery supplied with this product.
- Use only the power adapters supplied with this product.
- Make sure the electrical outlets are not controlled by wall switches.
- The power adapters are intended to be correctly oriented in a vertical or floor mount position. The prongs are not designed to hold the plug in place if they are plugged into a ceiling, under-the-table or cabinet outlet.
- Make sure the parent unit, the baby unit and the power adapter cord are out of reach of children.

Connect the baby monitor



Charge the parent unit battery

When you have connected the parent unit and installed its battery for the first time or after power outage, the parent unit powers on automatically. The battery icon indicates the battery status (see the following table).

NOTES

- The parent unit battery is fully charged after 3 hours of continuous charging.
- It takes longer to charge the battery when the parent unit is turned on. To shorten the charging time, turn the parent unit off while charging.
- The standby time varies depending on the sensitivity level you set, your actual use and the age of the battery.

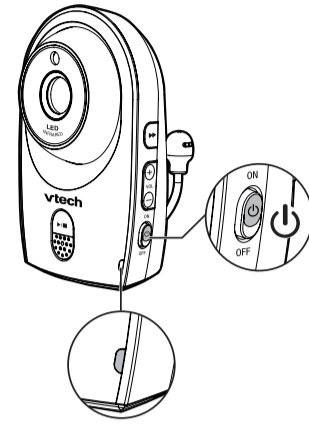
Battery indicators	Battery status	Action
The battery icon is off and displays.	No battery is installed but operates using AC power, or the battery has been installed incorrectly.	Install the parent unit battery. Charge without interruption (at least 30 minutes).
The screen displays Battery low at Parent Unit and the light flashes.	The battery has very little charge and may be used for only a short time.	Charge without interruption (about 30 minutes).
The battery icon becomes solid.	The battery is fully charged.	To keep the battery charged, connect it to AC power when not in use.

Before use

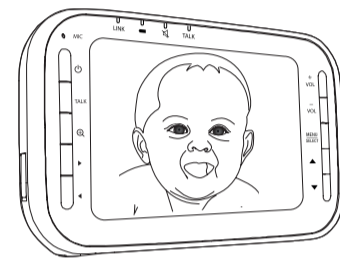
You may test the baby monitor before initial use, and at regular times thereafter.

To test your baby monitor:

- Place the parent unit and the baby unit in the same room to test the product. Make sure the baby unit is at least 1 meter / 3 feet away from the parent unit.
- Slide **ON/OFF** on the baby unit to turn it on.



- Upon initial use, the parent unit powers on automatically after connecting to AC power. The screen shows **Vtech** and **Powering on...**



NOTE

If both units are not connected, the parent unit displays **No link to CAM #** (# represents the selected baby unit number) and **Linking...** on the screen. The **LINK** light first flashes and then turns off. Move the parent unit closer to the baby unit.

Positioning the baby monitor

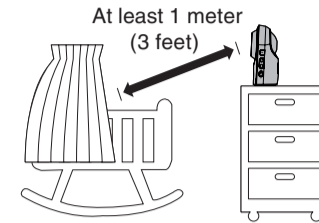
NOTE

This baby monitor is intended as an aid. It is not a substitute for proper adult supervision, and should not be used as such.

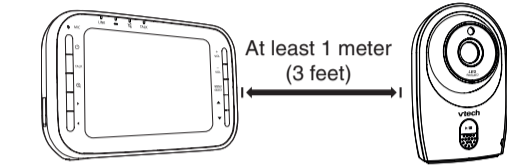
CAUTION

Keep the baby unit out of the reach of your baby. Never place or mount the baby unit inside the baby's crib or playpen.

- Place the baby unit at least 1 meter / 3 feet away from your baby. Adjust the angle of the camera to aim at your baby.



- Place parent unit at least 1 meter / 3 feet away from the baby unit.



NOTE

If you experience audio feedback on either the parent unit or baby unit, move the parent unit further away until there is no more audio feedback.

TIP

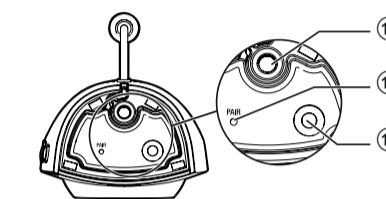
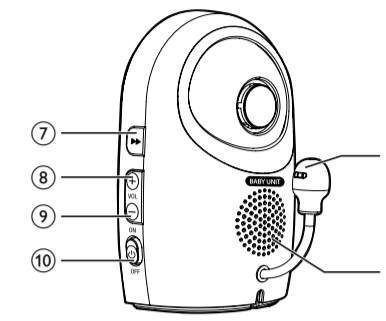
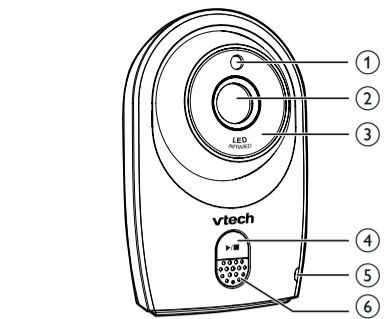
If you cannot hear the sounds transmitted from the baby unit, you can choose a higher sound sensitivity level and increase the speaker volume of the parent unit.

Operating range

The operating range of the baby monitor is up to 300 meters (1,000 feet) outdoors or 50 meters (160 feet) indoors. The actual operating range may vary depending on the environmental conditions and other interferences such as walls, doors and other obstructions.

Overview

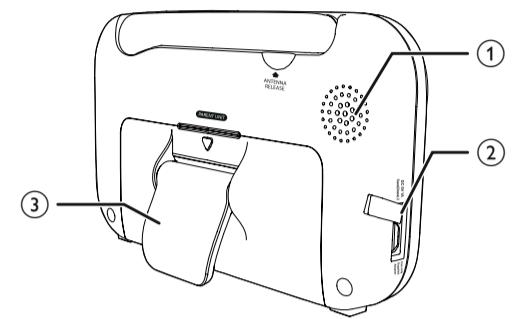
Baby unit overview



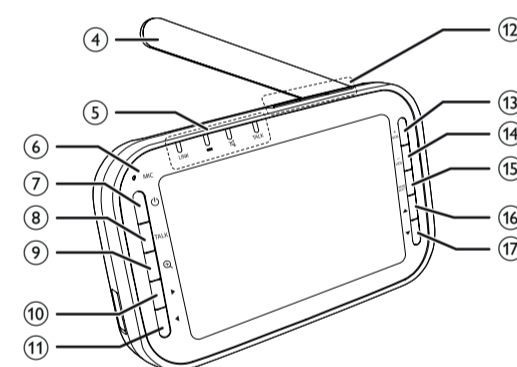
1	Light sensor
2	Camera
3	Infrared LEDs
4	▶/■ Play/Stop • Press to play or stop lullaby on the baby unit.
5	ON/OFF light
6	Microphone
7	▶ Skip • Press to play the next lullaby.
8	VOL+ • Press to increase the speaker volume.

9	VOL- • Press to decrease the speaker volume.
10	ON/OFF switch • Slide to turn on or off the baby unit.
11	Temperature sensor
12	Speaker
13	Threaded socket • For wall mount installation use.
14	PAIR • Press and hold to pair to the parent unit when a desired baby unit slot is chosen at the parent unit.
15	Power jack

Parent unit overview



1	Speaker
2	Power jack
3	Stand



4	Antenna
5	LED lights • Indicate the different statuses of the parent unit. For details, refer to Parent unit lights .
6	Microphone
7	On/off • Press to power on. • Press and hold to power off.
8	TALK • While viewing image, press and hold to talk to the selected baby unit.
9	Zoom • While viewing image, press to zoom in or out.
10	• While in a menu, press to select a feature.
11	• While in a menu, press to return to the main menu or idle screen.
12	VIEW • Press to view the image of the next registered baby unit in SINGLE-CAM mode. • Press and hold to turn off the parent unit screen. PATROL • Press to turn on or off the PATROL function. SPLIT • Press to turn on or off the SPLIT-VIEW mode.

13	+VOL • Press to increase the speaker volume.
14	-VOL • Press to decrease the speaker volume.
15	MENU/SELECT • Press to enter the menu. • While in a menu, press to choose an item, or save a setting.
16	▲ • While in a menu, press to scroll up.
17	▼ • While in a menu, press to scroll down.

Parent unit lights

LINK	On when moderate or high signal strength is detected between the parent unit and the selected baby unit. Flashes when low signal strength is detected between the parent unit and the selected baby unit. Off when the parent unit is turned off, or the link to the selected baby unit is lost.
LINK	On when the parent unit is connected to AC power, or the battery is charging. Flashes when the parent unit battery is low and needs charging. Off when the parent unit is disconnected from AC power.
TALK	On when the parent unit is talking to the baby unit.
TALK	On when the speaker volume of the parent unit is turned off.

Parent unit display icons

	Connection status <ul style="list-style-type: none">Full signal strength is detected between the baby unit and the parent unit.Partial signal strength is detected between the baby unit and the parent unit.Low signal strength is detected between the baby unit and the parent unit.Link between the baby unit and the parent unit is lost.
	Current view status <ul style="list-style-type: none">Displays the number of the baby unit that is being viewed when in SINGLE-CAM mode.Displays the highlighted baby unit when in SPLIT-VIEW mode.
	Patrol mode <ul style="list-style-type: none">Displays when the parent unit is in PATROL mode.
	Night viewing <ul style="list-style-type: none">Displays when the camera has activated the night viewing feature.
	Zoom <ul style="list-style-type: none">Displays when the camera at the baby unit has zoomed in.
	Temperature alert <ul style="list-style-type: none">Displays when the temperature alert is set on.
57°F or 14°C	Real-time temperature <ul style="list-style-type: none">Displays the real-time temperature of the selected baby unit.
	Mute alert <ul style="list-style-type: none">Displays when the speaker volume is set to off.Displays when SPLIT-VIEW mode is turned on.
	Sound level indicators <ul style="list-style-type: none">Displays the sound level according to the scales of loudness when there is sound transmitted from the baby unit.
	Speaker volume <ul style="list-style-type: none">Displays the speaker volume level while adjusting.

	Battery status <ul style="list-style-type: none">Animates when the battery is charging.Displays solid when the battery is fully charged.Displays when the battery is low and needs charging.
	AC power <ul style="list-style-type: none">Displays when the parent unit is connected to AC power without the battery.

Parent unit main menu icons

	Language You can select a language (English, French or Spanish) to be used in all screen displays.
	Alert tone You can set the parent unit to beep when <ul style="list-style-type: none">the parent unit operates in low battery condition;the link between the parent unit and the baby unit is lost; orthe baby unit detects sounds while in SPLIT-VIEW mode.
	Sensitivity With this feature, you can choose to hear sounds from the baby unit all the time, or to hear sounds that exceed a certain level. You can use the parent unit to adjust the microphone sensitivity of your baby unit. The higher the sensitivity level, the more sensitive the baby unit is in detecting sounds for transmitting to the parent unit.
	Temperature You can turn on the temperature alert feature so that the parent unit beeps whenever the room temperature detected by the baby unit falls out of the desired temperature range.

	Vibration You can turn on the vibration alert so that the parent unit vibrates when <ul style="list-style-type: none">the baby unit detects sounds while in SPLIT-VIEW mode;the link between the parent unit and the baby unit is lost; orthe temperature detected by the baby unit falls out of the preset temperature range.
	Sound-activated screen Automatically turns on the parent unit screen when a sound is detected in your baby's room. When no sound is detected, the screen is off to save power.
	Brightness You can change the brightness of the parent unit screen.
	Rename You can choose a specific name for the baby unit from a pre-defined name list.
	Pair/unpair The baby unit and parent unit provided are already paired. You can add or replace baby units (VM304, purchased separately) to your baby monitor system.

Parent unit display messages

	No link to CAM # (# represents the selected baby unit number).	The selected baby unit is out of range or is turned off.
	Battery low at Parent Unit	The battery level of the parent unit is very low and needs to be recharged.
	Battery empty. Powering off ...	The battery is empty and needs to be recharged.
	Sound detected at CAM # (# represents the selected baby unit number).	The sound level exceeds the threshold at CAM # in SPLIT-VIEW mode.

	Temperature too low at CAM # (# represents the selected baby unit number).	The temperature detected from the selected baby unit is below the selected minimum temperature.
	Temperature too high at CAM # (# represents the selected baby unit number).	The temperature detected from the selected baby unit is above the selected maximum temperature.
	Powering on...	The parent unit is turning on.
	Linking...	The parent unit is searching for baby units when the link is lost.

Using the baby monitor

Power on or off the baby unit

- Slide **ON/OFF** upward to turn on the baby unit. The **ON/OFF** LED light turns on.
- Slide **ON/OFF** downward to turn off the baby unit. The **ON/OFF** LED light turns off.

Power on or off the parent unit

- Press **ON/OFF** to turn on the parent unit. The **LINK** light turns on.
- Press and hold **ON/OFF** again to turn off the parent unit. The **LINK** light turns off.

Turn on or off the parent unit screen

You can turn on or off the parent unit screen without powering off the parent unit. You can still hear sound from the baby unit.

- Press and hold **VIEW** on the parent unit to turn off the screen.
- Press any key on the parent unit to turn on the screen again.

Adjust speaker volume

For parent unit:

- Press **VOL+** or **VOL-** on the parent unit at any time when viewing images.

NOTE

When the parent unit speaker volume is set to zero, appears on the screen and the light turns on.

For baby unit:

- Press **VOL+** or **VOL-** on the baby unit at any time.

Play lullaby on the baby unit

You can play lullaby on the baby unit to comfort your baby.

- Press **▶/■** on the baby unit to play lullaby.
- Press **▶/■** on the baby unit to play the other lullabies.
- Press **▶/■** again to stop the lullaby.

TIPS

- When the lullaby stops, press **▶/■** again to replay.
- You can press **VOL+** or **VOL-** on the baby unit to adjust the music volume while playing the lullaby.

Set the language

You can select a language (English, French or Spanish) to be used in all screen displays.

- Press **MENU** when the parent unit is not in use.
- Press **▼** or **▲** to choose **LANGUAGE**, then press **SELECT**.
- Press **▼** or **▲** to choose **English, Français** or **Español**, then press **SELECT** to confirm your selection.

Adjust screen brightness

You can change the brightness of the parent unit screen from **Level 1** to **Level 5**.

- Press **MENU** when the parent unit is not in use.
- Press **▼** or **▲** to choose **BRIGHTNESS**, then press **SELECT**.
- Press **▼** or **▲** to choose the desired level of brightness, then press **SELECT** to confirm your selection.

Adjust the sound sensitivity of the baby unit

You can choose to hear sounds from the baby unit all the time, or to hear sounds that exceed a certain level. You can use the parent unit to adjust the microphone sensitivity of your baby unit from **Level 1** to **Level 5**. The higher the sensitivity level, the more sensitive the baby unit is in detecting sounds for transmitting to the parent unit. The sound sensitivity is preset to **Level 3**.

Sound sensitivity table for reference

	Sensitivity	Description
Level 5	High sensitivity	High sensitivity level The parent unit speaker is constantly on, and you will hear all sounds (including background noises) from your baby's room.
Level 4		Medium high sensitivity level The parent unit speaker turns on for soft babbling and louder sounds from your baby. It remains quiet when your baby makes soft sounds.
Level 3		Medium sensitivity level The parent unit speaker turns on for loud babbling and louder sounds from your baby. It remains quiet when your baby makes soft sounds.
Level 2		Medium low sensitivity level The parent unit speaker turns on for crying and louder sounds from your baby. It remains quiet when your baby makes soft sounds.
Level 1	Low sensitivity	Low sensitivity level The parent unit speaker turns on for loud crying or screaming sounds from your baby. It remains quiet when your baby makes soft sounds.

- Press **MENU** when the parent unit is not in use.
- Press **▼** or **▲** to choose **SENSITIVITY**, then press **SELECT**.
 - If you have more than one baby unit, the system prompts you to choose the desired baby unit or all baby units, press **▼** or **▲** to choose **All CAM** or **CAM #**, then press **SELECT**.
- Press **▼** or **▲** to choose the desired sensitivity level, then press **SELECT** to confirm your selection.

TIP

You can adjust the baby unit placement to improve the sound detection.

Turn on or off the sound activation

The parent unit continuously monitors the sound level in your baby's room. When the sound activation mode is on, the parent unit screen turns on when the baby unit detects a sound.

As long as no sound is detected within 50 seconds, the parent unit screen is off to save power. When your baby starts to cry, the sound activation triggers the parent unit screen automatically turns on.

- Press **MENU** when the parent unit is not in use.
- Press **▼** or **▲** to choose **SOUND-ACTIVATED SCREEN**, then press **SELECT**.
- Press **▼** or **▲** to choose **On** or **Off**, then press **SELECT** to confirm your selection.

NOTE

If you mute the speaker while sound activation is on, then you hear a beep sound whenever the screen turns on.

Monitoring mode

Every time you turn on the parent unit, you enter the **SINGLE-CAM** mode. The screen displays image of a particular baby unit in full screen. If there are more than one baby units in your system, you can also monitor in the **SPLIT-VIEW** mode, where the screen displays a maximum of four baby units in one screen.

In **SINGLE-CAM mode**:

- Press **VIEW** repeatedly to view images of other baby units.

- Press **PATROL** to display images from different baby units in every 7 seconds. Press again to turn off the patrolling function.

- Press **SPLIT** key to enter the **SPLIT-VIEW** mode.

In **SPLIT-VIEW mode**:

- Press **▲, ▼, ◀ or ▶** to select a baby unit.
- Press **Q** or **VIEW** key to view images from the selected baby unit temporarily in **SINGLE-CAM** mode. It returns to **SPLIT-VIEW** mode after 10 seconds.
- Press **PATROL** key to display images from different baby units in every 7 seconds.
- Press **SPLIT** key again to return to **SINGLE-CAM** mode.

☞NOTE

The parent unit is muted while in **SPLIT-VIEW** mode.

Zoom

You can zoom in or out while viewing image from baby unit in **SINGLE-CAM** mode.

- Press **Q** to zoom in.
- Press and hold **▲, ▼, ◀** or **▶** to move the zoomed image upward, downward, leftward or rightward correspondingly.
- Press **Q** again to zoom out.

Talk

You can use the **TALK** function of the parent unit to comfort your baby in **SINGLE-CAM** mode.

- Press and hold **TALK** on the parent unit. The **TALK** light turns on.
- Speak towards the microphone on the parent unit. Your voice is broadcast to the baby unit.
- Release the **TALK** key to stop the broadcast. The **TALK** light goes off.

Set alert tone

Low battery tone

You can set the parent unit to beep when the parent unit operates in low battery condition.

- Press **MENU** when the parent unit is not in use.

Cautions

- Use and store the product at a temperature between 32°F and 104°F.
- Do not expose the product to extreme cold, heat or direct sunlight. Do not put the product close to a heating source.
- Batteries should not be exposed to excessive heat such as bright sunshine or fire.
- Make sure the baby unit(s) and the adapter cord(s) are always out of reach of the baby, at least 3 feet away from the baby or crib, to avoid a possible strangulation hazard.
- Never place the baby unit(s) inside the baby’s crib or playpen. Never cover the baby unit(s) or parent unit with anything such as a towel or a blanket.
- Other electronic products may cause interference with your baby monitor. Try installing your baby monitor as far away from these electronic devices as possible: wireless routers, radios, cellular telephones, intercoms, room monitors, television, personal computers, kitchen appliances and cordless telephones.

Precautions for users of implanted cardiac pacemakers

Cardiac pacemakers (applies only to digital cordless devices): Wireless Technology Research, LLC (WTR), an independent research entity, led a multidisciplinary evaluation of the interference between portable wireless devices and implanted cardiac pacemakers. Supported by the U.S. Food and Drug Administration, WTR recommends to physicians that:

Pacemaker patients

- Should keep wireless devices at least six inches from the pacemaker.
- Should NOT place wireless devices directly over the pacemaker, such as in a breast pocket, when it is turned ON.

WTR’s evaluation did not identify any risk to bystanders with pacemakers from other persons using wireless devices.

Electromagnetic fields (EMF)

This VTech product complies with all standards regarding electromagnetic fields (EMF). If handled properly and according to the instructions in this user’s manual, the product is safe to be used based on scientific evidence available today.

The RBRC® seal

The RBRC® seal on the lithium-ion battery indicates that VTech Communications, Inc. is voluntarily participating in an industry program to collect and recycle these batteries at the end of their useful lives, when taken out of service within the United States and Canada.

The RBRC® program provides a convenient alternative to placing used lithium-ion batteries into the trash or municipal waste, which may be illegal in your area.

- Press **▼** or **▲** to choose **ALERT TONE**, then press **SELECT**.

- Press **▼** or **▲** choose **Low Battery Tone**, then press **SELECT**.

- Press **▼** or **▲** to choose **On** or **Off**, then press **SELECT** to confirm your selection.

No link alert

You can set the parent unit to beeps when the link between the parent unit and the baby unit is lost.

- Press **MENU** when the parent unit is not in use.
- Press **▼** or **▲** to choose **ALERT TONE**, then press **SELECT**.
- Press **▼** or **▲** to choose **No Link Alert**, then press **SELECT**.
- Press **▼** or **▲** to choose **On** or **Off**, then press **SELECT** to confirm your selection.

Sound alert

You can turn on the sound alert feature so that, while in **SPLIT-VIEW** mode, the parent unit beeps and displays **Sound detected at CAM #** whenever the baby unit detects sounds.

- Press **MENU** when the parent unit is not in use.
- Press **▼** or **▲** to choose **ALERT TONE**, then press **SELECT** to select.
- Press **▼** or **▲** to choose **Sound Alert**, then press **SELECT**.
- Press **▼** or **▲** to choose **On** or **Off**, then press **SELECT** to confirm your selection.

Monitor the temperature

To monitor the temperature of your baby’s room, you can turn on the temperature alert feature on the parent unit. It beeps whenever the temperature detected by the baby unit falls out of the desired temperature range.

Minimum temperature

You can set the desired minimum room temperature of the room temperature alert range. The minimum temperature can be set between **52 °F (11 °C)** and **69 °F (20 °C)**.

- Press **MENU** when the parent unit is not in use.
- Press **▼** or **▲** to choose **TEMPERATURE**, then press **SELECT**.

- Press **▼** or **▲** to choose **Minimum**, then press **SELECT**.

- If you have more than one baby unit, the system prompts you to choose the desired baby unit or all baby units, press **▼** or **▲** to choose **All CAM** or **CAM #**, then press **SELECT**.

- Press **▼** or **▲** to choose the desired temperature, then press **SELECT** to confirm your selection.

Maximum temperature

You can set the desired maximum room temperature of the temperature alert range. The maximum temperature can be set between **70 °F (21 °C)** and **86 °F (30 °C)**.

- Press **MENU** when the parent unit is not in use.
- Press **▼** or **▲** to choose **TEMPERATURE**, then press **SELECT**.
- Press **▼** or **▲** to choose **Maximum**, then press **SELECT**.
 - If you have more than one baby unit, the system prompts you to choose the desired baby unit or all baby units, press **▼** or **▲** to choose **All CAM** or **CAM #**, then press **SELECT**.

- Press **▼** or **▲** to choose the desired temperature, then press **SELECT** to confirm your selection.

Temperature alert

You can set the parent unit to beep when the temperature is out of the preset temperature range.

- Press **MENU** when the parent unit is not in use.
- Press **▼** or **▲** to choose **TEMPERATURE**, then press **SELECT**.
- Press **▼** or **▲** to choose **Alert**, then press **SELECT**.
 - If you have more than one baby unit, the system prompts you to choose the desired baby unit or all baby units, press **▼** or **▲** to choose **All CAM** or **CAM #**, then press **SELECT**.
- Press **▼** or **▲** to choose **On** or **Off**, then press **SELECT** to confirm your selection.

Temperature format

You can choose to display the temperature in Fahrenheit (°F) or Celsius (°C).

- Press **MENU** when the parent unit is not in use.

- Press **▼** or **▲** to choose **TEMPERATURE**, then press **SELECT**.

- Press **▼** or **▲** to choose **Format**, then press **SELECT**.

- Press **▼** or **▲** to choose **Fahrenheit** or **Celsius**, then press **SELECT** to confirm your selection.

Vibration

You can turn on the vibration feature so that the parent unit vibrates when

- the baby unit detects sounds in **SPLIT-VIEW** mode;
- the link between the parent unit and the baby unit is lost; or
- the temperature detected by the baby unit falls out of the preset temperature range.

- Press **MENU** when the parent unit is not in use.
- Press **▼** or **▲** to choose **TEMPERATURE**, then press **SELECT**.
- Press **▼** or **▲** to choose **Maximum**, then press **SELECT**.
 - If you have more than one baby unit, the system prompts you to choose the desired baby unit or all baby units, press **▼** or **▲** to choose **All CAM** or **CAM #**, then press **SELECT**.
- Press **▼** or **▲** to choose the desired temperature, then press **SELECT** to confirm your selection.

- Always on** - The parent unit vibrates regardless of the speaker volume setting.
- Off** - The parent unit will not vibrate at all instances.

- Press **SELECT** to confirm your selection.

Rename the baby unit

You can rename each baby unit. Once the baby unit is renamed, its new name together with the baby unit number will appear in the sub-menu of below options:

- Sensitivity
- Temperature
- Rename
- Pair/unpair

- Press **MENU** when the parent unit is not in use.
- Press **▼** or **▲** to choose **RENAME**, then press **SELECT**.
- Press **▼** or **▲** to choose the desired baby unit, then press **SELECT**.
- Press **▼** or **▲** to choose the desired name for the baby unit, then press **SELECT** to confirm your selection.

Night vision

The baby unit has infrared LEDs that allow you to see your baby clearly at night or in a dark room. When the baby unit detects low light levels, the infrared LEDs are switched on automatically.

☞NOTE

When the infrared LEDs are on, the image is in black and white. This is normal due to external light sources.

☞TIP

Depending on the surroundings and other interfering factors, like lightings, objects, colors and backgrounds, the display resolution may vary. Adjust the baby unit’s angle or place the baby unit at a higher level to prevent glare and blurry display.

Add new baby unit (VM304)

The baby units and parent unit provided are already paired. You can add or replace any baby units (**VM304** purchased separately) to your video and audio monitor system. You can pair a maximum of four baby units to your parent unit.

For more details, refer to the user’s manual that comes with your **VM304** new baby unit.

General product care

To keep this product working well and looking good, follow these guidelines:



- Avoid putting it near heating appliances and devices that generate electrical noise (for example, motors or fluorescent lamps).
- DO NOT expose it to direct sunlight or moisture.
- Avoid dropping the product or treating it roughly.
- Clean with a soft cloth.
- DO NOT immerse the parent unit and the baby unit in water and do not clean them under the tap.
- DO NOT use cleaning spray or liquid cleaners.
- Make sure the baby unit and parent unit are dry before you connect them to the mains again.

Storage

When you are not going to use the baby monitor for some time, remove the rechargeable battery from the parent unit. Store the parent unit, the baby unit and the adapters in a cool and dry place.

Frequently asked questions

Below are the questions most frequently asked about the baby monitor. If you cannot find the answer to your question, visit our website at www.vtechphones.com, or contact 1 (800) 595-9511 for customer service.

Why does the baby monitor not respond normally?	<p>Try the following (in the order listed) for common sure:</p> <ol style="list-style-type: none">Disconnect the power to the baby units and the parent unit. Remove the batteries in the parent unit. Then install the batteries again. Wait a few minutes before connecting power back to the baby units and the parent unit. Turn on the baby units and the parent unit. Wait for the parent unit to synchronize with the baby units. Allow up to one minute for this to take place.
Why don't the power-on light of the baby unit and parent unit go on when I switch on the units?	<p>Perhaps the parent unit is not connected to the mains. Insert the appliance plug into the parent unit and put the adapter in a wall socket. Then press  to switch on the parent unit and to establish connection with the baby unit.</p> <p>Perhaps the baby unit is not connected to the mains. Connect the baby unit to the mains. Then set the  switch to ON to switch on the baby unit and to establish connection with the parent unit.</p>
Why doesn't my parent unit charge while connected to AC power?	<p>Make sure the power is not controlled by a wall switch.</p> <p>You may have used the battery for a long time. Replace a new battery.</p>
Why is my screen in black and white?	<p>The screen is in black and white during nighttime or in a dark room. This is normal due to external light sources.</p>
Why do I get glare or blurry display on my screen when viewing my baby at night?	<p>During nighttime or in a dark room, the surroundings and other interfering factors, like lightings, objects, colors and backgrounds may affect the image quality on your parent unit screen. Adjust the baby unit's angle or place the baby unit at a higher level to prevent glare and blurry display.</p>
Why does the baby monitor produce a high-pitched noise?	<p>The units may be too close to each other. Make sure the parent unit and the baby unit at least 1 meter/3 feet away from each other.</p>

Mises en garde

- Utilisez et entreposez le produit à une température entre 0 ° C (32 ° F) et 40 ° C (104 ° F).
- N'exposez pas cet appareil à des froids ou des chaleurs extrêmes, ainsi qu'à la lumière directe du soleil. Ne l'installez pas près d'une source de chauffage.
- Le bloc-piles ne doit pas être exposé à la chaleur excessive telle que la lumière du soleil ou au feu.
- Assurez-vous que le moniteur et le cordon de l'adaptateur sont toujours hors de portée des enfants, à au moins 1 mètre (3 pieds) de l'enfant ou du berceau, pour éviter tout risque de strangulation.
- Ne jamais placer le moniteur à l'intérieur du berceau ou du parc de bébé. Ne jamais couvrir le moniteur ou l'unité (s) portative avec un article tel une serviette ou une couverture.
- D'autres équipements électroniques peuvent produire des interférences sur votre moniteur vidéo et audio. Tentez d'installer votre moniteur vidéo ou audio à l'écart des appareils électroniques tels que des radios sans fil, radios, téléphones cellulaires, interphones, moniteurs, téléphones, ordinateurs personnels, électroménagers et téléphones sans fil.

Stimulateurs cardiaques implantés dans l'organisme

Les stimulateurs cardiaques (ne s'applique qu'aux dispositifs numériques sans fil) : L'organisme "Wireless Technology Research, LLC (WTR), une firme de recherche indépendante, a mené une évaluation pluridisciplinaire des interférences entre les téléphones sans fil portatifs et les stimulateurs cardiaques implantés dans l'organisme. Appuyée par l'Administration des aliments et drogues (FDA) des États-Unis, la firme WTR recommande aux médecins:

Avis aux détenteurs de stimulateurs cardiaques

- Vous devriez maintenir les dispositifs sans fil à au moins six pouces du stimulateur cardiaque.

- Ils ne doivent PAS placer le téléphone sans fil directement sur le stimulateur cardiaque, tel que dans une poche de chemise, lorsque celui-ci est en marche.

L'étude effectuée par l'organisme WRS n'a pas identifié de risque pour les détenteurs de simulateurs cardiaques causés par les gens qui utilisent dispositifs sans fil à proximité de ceux-ci.

Champs électromagnétiques (EMF)

Ce produit de VTech est conforme à toutes les normes se rapportant aux champs électromagnétiques (EMF) standard. Si vous le manipulez correctement en suivant les instructions de ce guide, son utilisation sera sécuritaire pendant de nombreuses années, selon les meilleures évidences scientifiques dont nous disposons aujourd'hui.

The **ON/OFF** light on the baby unit flashes and the parent unit displays "T

- Press **MENU** when the parent unit is not in use.
- Press **▼** or **▲** to choose **PAIR/UNPAIR CAM**, then press **SELECT**.
- Press **▼** or **▲** to choose **Pair CAM**, then press **SELECT**.
- Press **▼** or **▲** to choose an **empty baby unit slot**, then press **SELECT**. The parent unit screen displays **Press and hold the pair button at the CAM for 5 seconds until the power indicator flashes..**
- Immediately press and hold **PAIR** on the bottom of the baby unit with a narrow pointed object such as a pencil. The LED light flashes quickly.

When pairing is successful, the screen displays the view of newly paired baby unit in **SINGLE-CAM** mode. The LED light on the new baby unit remains.

- If pairing fails, the screen displays **Pairing failed**. Try the pairing process again.
- Only one baby unit can be paired at a time.

The baby units may be out of range. Move the parent unit closer to the baby units (but not less than 3 feet).

If the parent unit is powered by the provided battery, it may not have enough charge for the parent unit to perform normally. Charge the battery in the parent unit for up to 3 hours.

If your parent unit is in **SPLIT-VIEW** mode, some of your baby units may detect sounds.

The temperature of your baby's room may be too high or too low.

You may have set the sound sensitivity level to **level 5** when the sound alert (and vibration) feature are turned on. The parent unit notifies you of all sounds including background noise with beeps (or vibrations). Adjust the sound sensitivity to a lower level.

The baby unit also picks up other sounds than those of your baby. Adjust the sensitivity level to a lower level or adjust the speaker volume on the parent unit.

Why don't I hear a sound/ Why can't I hear my baby cry?	<p>The parent unit speaker volume may be too low or off. Press VOL+ to increase the volume.</p> <p>You may have set a low sound sensitivity level. See Adjust the sound sensitivity of the baby unit to change the setting.</p>
Why can't I establish a connection? Why is the connection lost every now and then? Why are there sound interruptions?	<p>The baby units may be out of range. Move the parent unit closer to the baby units (but not less than 3 feet).</p> <p>Other electronic products may cause interference with your baby monitor. Try installing your baby monitor as far away from these electronic devices as possible.</p>

Important safety instructions

When using your equipment, basic safety precautions should always be followed to reduce the risk of fire, electric shock and injury, including the following:


- Follow all warnings and instructions marked on the product.
- Adult setup is required.
- This product is intended as an aid. It is not a substitute for responsible and proper adult supervision and should not be used as such.
- This product is not intended for use as a medical monitor.
- Do not use this product near water. For example, do not use it next to a bath tub, wash bowl, kitchen sink, laundry tub or swimming pool, or in a wet basement or shower.
- CAUTION:** Use only the batteries indicated in this manual. There may be a risk of explosion if a wrong type of battery is used for the parent unit. Use only the supplied rechargeable battery or replacement battery pack (BT198555/BT298555) for the parent unit. Do not dispose of batteries in a fire. They may explode. Dispose of used battery according to the information in The RBRC® seal.
- Use only the adapters included with this product. Incorrect adapter polarity or voltage can seriously damage the product.

LPS or Class 2 Baby unit power adapter: Input 100-240V AC 50/60 Hz; output: 6V DC 1A


LFS or Class 2 Parent unit power adapter: Input 100-240V AC 50/60 Hz; output: 5V DC 1A. For pluggable equipment, the socket-outlet shall be installed near the equipment and shall be easily accessible.
- The power adapters are intended to be correctly oriented in a vertical or floor mount position. The prongs are not designed to hold the plug in place if it is plugged into a ceiling, under-the-table or cabinet outlet.

- Unplug this product from the wall outlet before cleaning. Do not use liquid or aerosol cleaners. Use a damp cloth for cleaning.
- Unplug the power cords before replacing batteries.
- Do not cut out of the power adapters to replace them with other plugs, as this causes a hazardous situation.
- Do not allow anything to rest on the power cords. Do not install this product where the cords may be walked on or crimped.
- This product should be operated only from the type of power source indicated on the marking label. If you are not sure of the type of power supply in your home, consult your dealer or local power company.
- Do not overload wall outlets or use an extension cord.
- Do not place this product on an unstable table, shelf, stand or other unstable surfaces.
- This product should not be placed in any area where proper ventilation is not provided. Slots and openings in the back or bottom of this product are provided for ventilation. To protect them from overheating, these openings must not be blocked by placing the product on a soft surface such as a bed, sofa or rug. This product should never be placed near or over a radiator or heat register.
- Never push objects of any kind into this product through the slots because they may touch dangerous voltage points or create a short circuit. Never spill liquid of any kind on the product.
- To reduce the risk of electric shock, do not disassemble this product, but take it to an authorized service facility. Opening or removing parts of the product other than specified access doors may expose you to dangerous voltages or other risks. Incorrect reassembling can cause electric shock when the product is subsequently used.
- You should test the sound reception every time you turn on the units or move one of the components.
- Periodically examine all components for damage.
- Be aware of possible loss of privacy while using public airwaves. Conversations may be picked up by other nursery monitors, cordless phones, scanners, etc.
- Children should be supervised to ensure that they do not play with the product.
- The product is not intended for use by persons (including children) with reduced physical, sensory or mental capabilities, or lack of experience and knowledge, unless they have been given supervision or instruction concerning use of the appliance by a person responsible for their safety.

SAVE THESE INSTRUCTIONS												
<p>Limitations: Implied warranties, including those of fitness for a particular purpose and merchantability (an unwritten warranty that the Product is fit for ordinary use) are limited to one year from the date of purchase. Some states/provinces do not allow limitations on how long an implied warranty lasts, so the above limitation may not apply in your. In no event shall VTech be liable for any indirect, special, incidental, consequential, or similar damages (including, but not limited to lost profits or revenue, inability to use the Product or other associated equipment, the product substitute expense, and claims by third parties) resulting from the use of this Product. Some states/provinces do not allow the exclusion or limitation of incidental or consequential damages, so the above limitation or exclusion may not apply to you.</p> <p>Please retain your original sales receipt as proof of purchase.</p>												
Technical specifications												
<table> <tbody><tr> <td>Frequency control</td> <td>Crystal controlled PLL synthesizer</td></tr> <tr> <td>Transmit frequency</td> <td>Baby unit: 2406 - 2475 MHz <p>Parent unit: 2406 - 2475 MHz</p></td></tr> <tr> <td>Channels</td> <td>24</td></tr> <tr> <td>LCD</td> <td>4.3" Color LCD (WQVGA 480x272 pixel)</td></tr> <tr> <td>Nominal effective range</td> <td>Maximum power allowed by FCC and IC. Actual operating range may vary according to environmental conditions at the time of use.</td></tr> <tr> <td>Power requirements</td> <td>Parent unit: 3.7V Li-polymer battery <p>Baby unit power adapter: Input: 100-240V AC 50/60Hz <p>Output: 6V DC @ 1A</p> <p>Parent unit power adapter: Input: 100-240V AC 50/60Hz <p>Output: 5V DC @ 1A</p></p></p></td></tr> </tbody></table>	Frequency control	Crystal controlled PLL synthesizer	Transmit frequency	Baby unit: 2406 - 2475 MHz <p>Parent unit: 2406 - 2475 MHz</p>	Channels	24	LCD	4.3" Color LCD (WQVGA 480x272 pixel)	Nominal effective range	Maximum power allowed by FCC and IC. Actual operating range may vary according to environmental conditions at the time of use.	Power requirements	Parent unit: 3.7V Li-polymer battery <p>Baby unit power adapter: Input: 100-240V AC 50/60Hz <p>Output: 6V DC @ 1A</p> <p>Parent unit power adapter: Input: 100-240V AC 50/60Hz <p>Output: 5V DC @ 1A</p></p></p>
Frequency control	Crystal controlled PLL synthesizer											
Transmit frequency	Baby unit: 2406 - 2475 MHz <p>Parent unit: 2406 - 2475 MHz</p>											
Channels	24											
LCD	4.3" Color LCD (WQVGA 480x272 pixel)											
Nominal effective range	Maximum power allowed by FCC and IC. Actual operating range may vary according to environmental conditions at the time of use.											
Power requirements	Parent unit: 3.7V Li-polymer battery <p>Baby unit power adapter: Input: 100-240V AC 50/60Hz <p>Output: 6V DC @ 1A</p> <p>Parent unit power adapter: Input: 100-240V AC 50/60Hz <p>Output: 5V DC @ 1A</p></p></p>											

Credits:
The <i>Background Noise</i> sound file was created by Caroline Ford, and is used under the Creative Commons license.
The <i>Stream Noise</i> sound file was created by Caroline Ford, and is used under the Creative Commons license.
The <i>Crickets At Night</i> sound file was created by Mike Koenig, and is used under the Creative Commons license.
The <i>Heart Beat</i> sound file was created by Zarabadeu, and is used under the Creative Commons license.


Frequency control	Crystal controlled PLL synthesizer
Transmit frequency	Baby unit: 2406 - 2475 MHz <p>Parent unit: 2406 - 2475 MHz</p>
Channels	24
LCD	4.3" Color LCD (WQVGA 480x272 pixel)
Nominal effective range	Maximum power allowed by FCC and IC. Actual operating range may vary according to environmental conditions at the time of use.
Power requirements	Parent unit: 3.7V Li-polymer battery <p>Baby unit power adapter: Input: 100-240V AC 50/60Hz <p>Output: 6V DC @ 1A</p> <p>Parent unit power adapter: Input: 100-240V AC 50/60Hz <p>Output: 5V DC @ 1A</p></p></p>

Credits:
The <i>Background Noise</i> sound file was created by Caroline Ford, and is used under the Creative Commons license.
The <i>Stream Noise</i> sound file was created by Caroline Ford, and is used under the Creative Commons license.
The <i>Crickets At Night</i> sound file was created by Mike Koenig, and is used under the Creative Commons license.
The <i>Heart Beat</i> sound file was created by Zarabadeu, and is used under the Creative Commons license.


Specifications are subject to change without notice.
© 2015 for VTech Communications, Inc. All rights reserved. 05/15_VM341-X_CIB_V3.0
Document order number: 91-008406-030-100